

Exclusive Tank Erection Method for Existing Plants with Limited Access

Developed by Plasticon Canada Inc.
for Storage Tanks, Process Tanks, Scrubbers, etc

Can't Fit a Large Diameter Tank Inside your Manufacturing Plant, Building or Room Without Making Costly Structural Changes?

Adding or replacing industrial equipment can be challenging. Especially when inserting a large diameter tank in a limited access area. Your structural costs can quickly increase as more rooms and plant equipment are affected by this new addition.

Plasticon has developed a special solution for this recurring problem. Our unique method alone is responsible for saving tens of thousands in additional structural costs and service disruptions. We have perfected this method for field-fabricated tanks where limited access is the problem.

Our Exclusive On-Site Tank Erection Method Will Work for Just about Anything: Any Tanks, Any Size, Anywhere!

With our exclusive tank erection method, you won't have to:

- tear down or dismantle any wall structures
- open up the roof to your facility and rooms
- relocate the piping, electrical and other components
- shut down your plant room equipment and operations
- make new and often expensive structural changes

Our proprietary method will save you time, money and headaches. All we need to fabricate your tanks will fit through your main access points. Generally, a field-fabricated tank costs about 40% more than shop-fabricated tanks yet it is often much cheaper than making these changes.

*If you need to fit a tank in a limited access or constricted area, we have the perfect solution for you!
Contact us today for more details and pricing.*

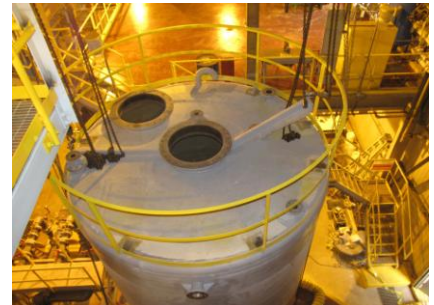
Structural Savings: \$ 10,000 - \$ 100,000



Tank Dimension: Two FRP mixing tanks
(4.3m Ø x 7.6m height) installed on-site
Access Dimension: 3m large x 3m height



Tank Dimension: Two rectangular tanks
(2.8m large x 3m long x 2.8m height)
Access Dimension: 1.5m large x 2m height



Tank Dimension: Sulfuric acid tank (3.7m Ø
x 10.6m height) installed on-site
Access Dimension: 2.4m large x 3m height